



Retinal Exam

At **Advanced Eyecare of Michigan**, we pride ourselves on providing our patients with the best possible standard of care. **We recommend the optomap® Retinal Exam for all our patients.** This non-invasive procedure allows your doctor to see a much broader and more detailed view of the retina that is not possible with conventional methods. When reviewed, the scan becomes a permanent part of your medical file, enabling your doctor to make important comparisons should potential vision threatening conditions show themselves at a future examination. **Dr. Staniszewski and Dr. Clancy believe that the optomap® Retinal Exam is an essential part of your comprehensive eye exam.**

The co-pay/fee is \$36. Would you like to have this done?

Please circle: Yes or No

Signature: _____

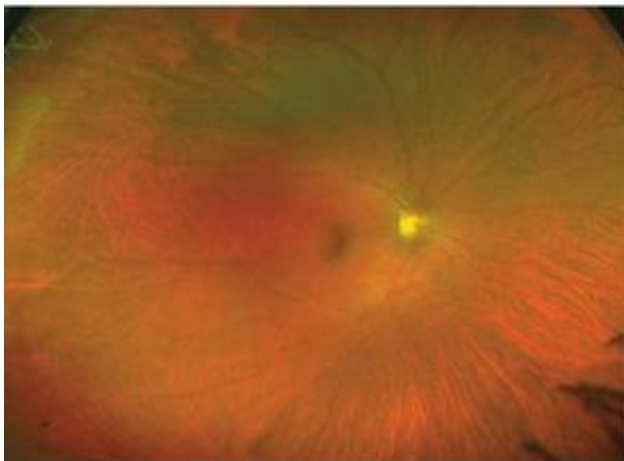
Date: _____

Please note: Patients with epilepsy seizure disorder should decline this exam.

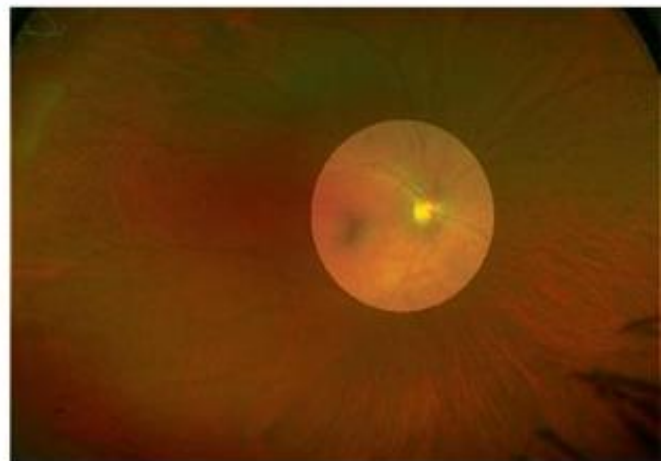
Any questions you have about the optomap® Retinal Exam can be directed to your doctor when they review the images with you during your examination.

Comparison of Fields of View

An **optomap** retinal image compared to conventional devices in a single capture.



optomap® Retinal image
(200°)



Fundus Camera
(about 45°)